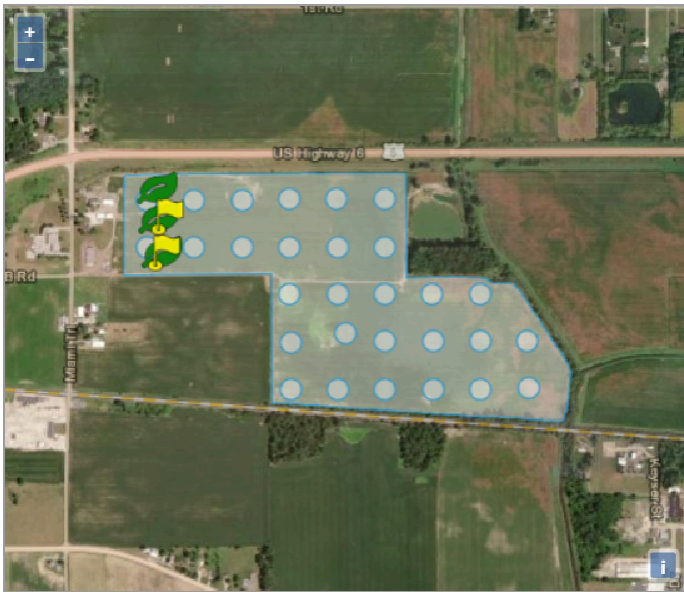


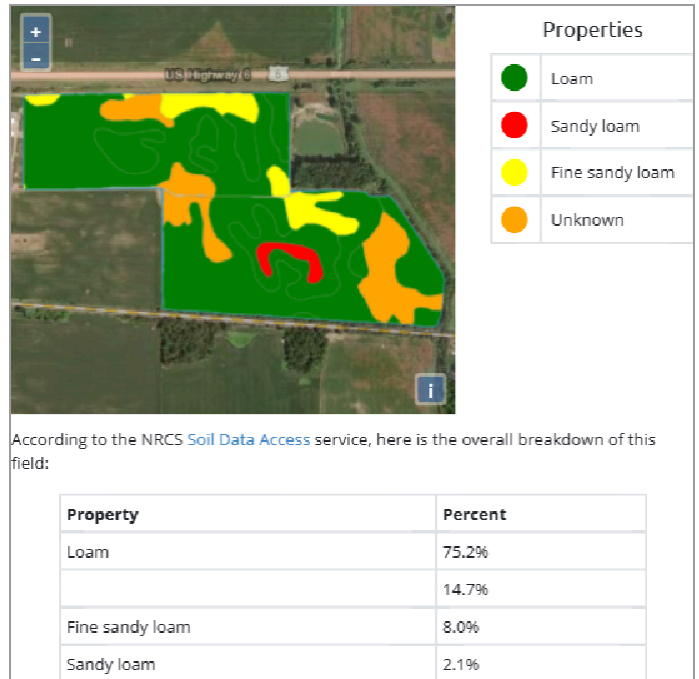
Product Trial Report

GROWER DETAILS	FIELD DETAILS	PLANTING/HARVEST DETAILS	Total Acre Final Report
Grower	Total Acres: 146.39	Crop: Corn	Report Date: 10/28/2024
City & State: Bremen, IN	Soil Type: Please see Soil Type Map	Plant Date: 05/23/2024	Harvest Year: 2024
Zip Code: 46506	Tile: Spot Tile	Row Spacing: 30"	Crop: Corn
	Irrigation: Pivot	Planting Depth: 2.50	Trial Name: X246 Trial
	Fall Tillage: Conventional	Harvest Date: 10/23/2024	Trial Type: In-Furrow, V4, V10, VT
	Spring Tillage: Vertical/Min Till	Hybrid: Pioneer	Product: SB Armor17-K
	Previous Crop: Corn	Seed Company: P14830Q	
		Population: 34600	

Field Map

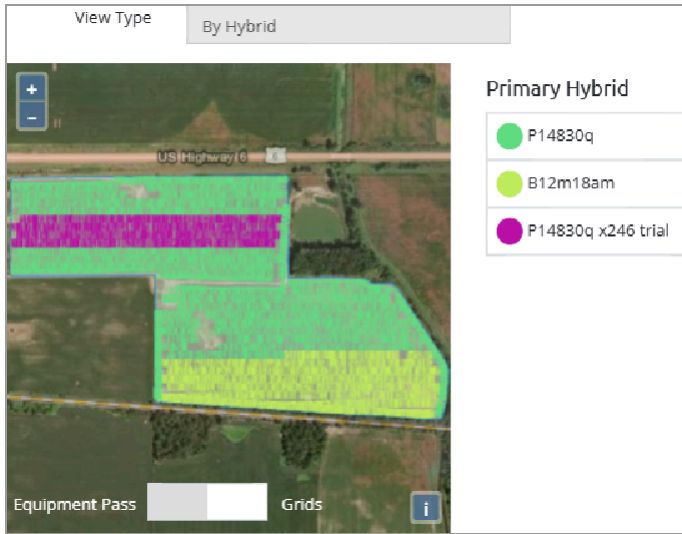


Soil Type



Product Trial Report

Planting Map



Trial Zones



Product Trial Report

Flag Test Data

X246

	Date	Time	Color	Count	Soil Temp.	GDUs	GDU delta
1	05/28/2024	9:08 AM	white	17	67 °F	79	
2	05/28/2024	8:00:50 PM	blue	12	67 °F	84	5
3	05/29/2024	07:56 AM	green	5	66 °F	89	

Control

	Date	Time	Color	Count	Soil Temp.	GDUs	GDU delta
1	05/28/2024	9:09 AM	White	17	67 °F	79	
2	05/28/2024	8:01 PM	blue	11	0 °F	84	5
3	05/29/2024	7:57:39 PM	green	5	66 °F	93	

Product Trial Report

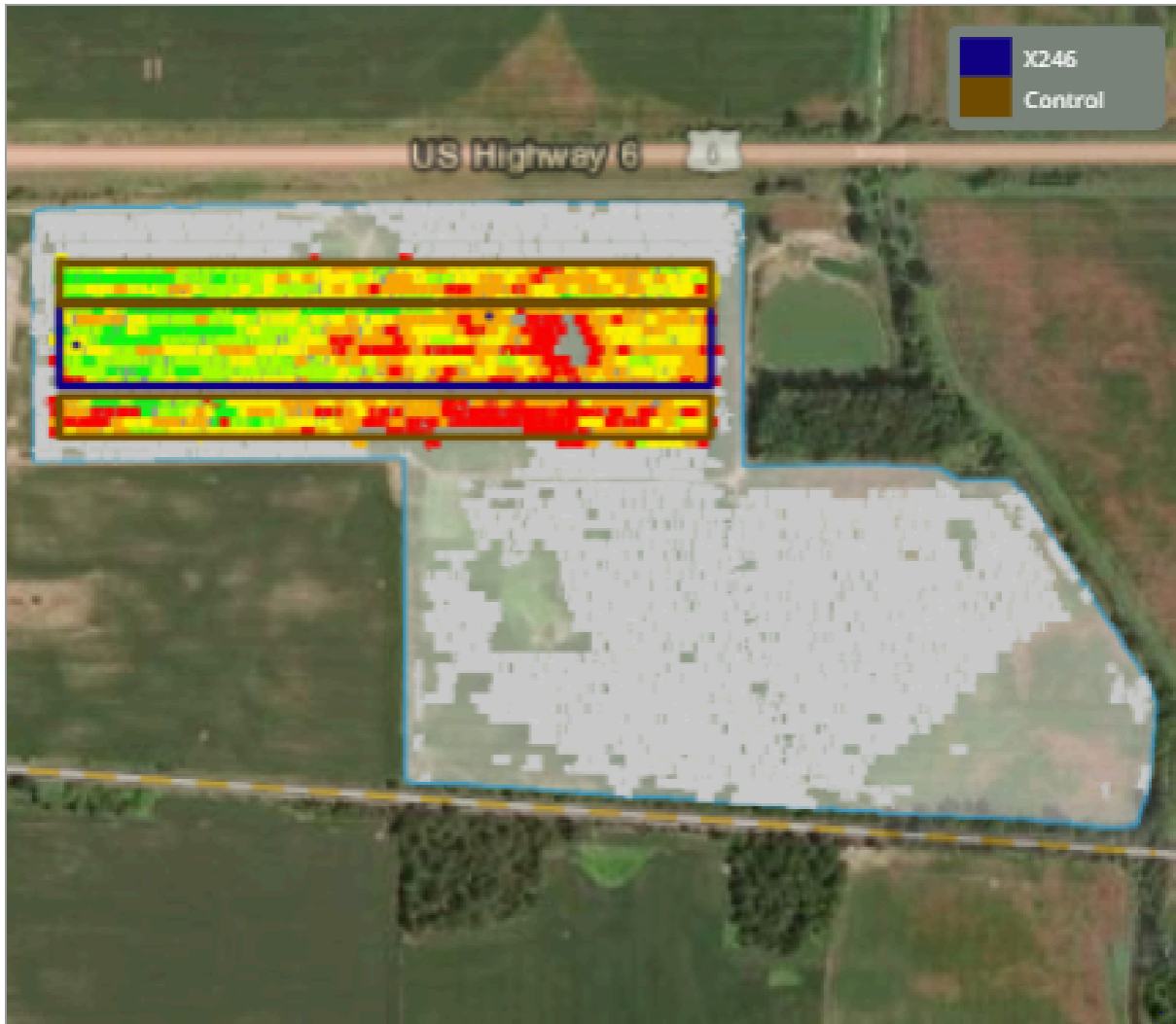
Tissue Results Data

Date	GDU's	Water	Tissue Site	Nitrogen	Phosphorus	Potassium	Magnesium	Calcium	Sulfur	Zinc	Manganese	Copper	Iron	Boron	Aluminum	Molybdenum	Sodium
06/10/2024	278	-	X246	5.03 %	0.55 %	4.28 %	0.21 %	0.4 %	0.47 %	45.54 ppm	59.65 ppm	12.95 ppm	224.79 ppm	19.24 ppm		0.24 ppm	0.19 ppm
			Control	5.35 %	0.49 %	4.1 %	0.21 %	0.44 %	0.42 %	34.92 ppm	53.7 ppm	11.13 ppm	215.84 ppm	18.74 ppm		0.46 ppm	0.16 ppm
06/17/2024	441	0.6 in	X246	4.3 %	0.46 %	4.25 %	0.23 %	0.34 %	0.32 %	26.73 ppm	39.38 ppm	9.6 ppm	183.22 ppm	23.07 ppm		0.72 ppm	0.34 ppm
			Control	3.92 %	0.52 %	4.24 %	0.23 %	0.29 %	0.33 %	36.51 ppm	55.54 ppm	13.21 ppm	282 ppm	34.8 ppm		1.1 ppm	0.29 ppm
07/01/2024	784	2.1 in	X246	4.1 %	0.31 %	2.94 %	0.18 %	0.26 %	0.21 %	23.98 ppm	38.56 ppm	7.9 ppm	153.69 ppm	50.3 ppm		0.4 ppm	317.73 ppm
			Control	3.72 %	0.35 %	3.03 %	0.15 %	0.22 %	0.22 %	25.22 ppm	39.87 ppm	7.9 ppm	175.11 ppm	20.94 ppm		0.63 ppm	0.05 ppm
07/08/2024	948	0.1 in	X246	4.35 %	0.42 %	2.95 %	0.23 %	0.35 %	0.31 %	26.77 ppm	145.65 ppm	14.34 ppm	185.76 ppm	27.65 ppm		0.85 ppm	0.37 ppm
			Control	4.44 %	0.38 %	2.86 %	0.18 %	0.34 %	0.28 %	23.82 ppm	113.52 ppm	11.9 ppm	148.99 ppm	21.24 ppm		0.44 ppm	0.29 ppm
07/15/2024	1112	5.6 in	X246	3.5 %	0.48 %	2.83 %	0.17 %	0.24 %	0.22 %	26.13 ppm	51.66 ppm	11.69 ppm	160.98 ppm	14.6 ppm		0.49 ppm	0.36 ppm
			Control	3.54 %	0.45 %	3.06 %	0.15 %	0.18 %	0.26 %	39.02 ppm	51.81 ppm	9.84 ppm	140.62 ppm	10.71 ppm		0.41 ppm	0.35 ppm
07/22/2024	1243	0.9 in	X246	3.42 %	0.37 %	2.55 %	0.15 %	0.23 %	0.23 %	26.38 ppm	41.26 ppm	5.58 ppm	128 ppm	18.56 ppm		0.43 ppm	0.17 ppm
08/05/2024	1574	1.3 in	X246	3.65 %	0.34 %	2.55 %	0.29 %	0.49 %	0.26 %	32.55 ppm	97.33 ppm	12.07 ppm	184.11 ppm	15.53 ppm		0.57 ppm	0.12 ppm
			Control	3.64 %	0.41 %	2.85 %	0.32 %	0.76 %	0.31 %	39.5 ppm	91.49 ppm	15.82 ppm	292.86 ppm	25.25 ppm		0.99 ppm	0.2 ppm
08/19/2024	1850	2.2 in	X246	3.28 %	0.32 %	2.69 %	0.22 %	0.31 %	0.2 %	26.48 ppm	87.21 ppm	9.76 ppm	173.35 ppm	15.1 ppm		0.55 ppm	0.42 ppm
			Control	3.19 %	0.36 %	3.16 %	0.2 %	0.3 %	0.21 %	28.45 ppm	43.43 ppm	10.67 ppm	210.4 ppm	16.37 ppm		0.47 ppm	0.59 ppm
09/09/2024	2251	3.8 in	X246	2.88 %	0.26 %	3.01 %	0.22 %	0.32 %	0.22 %	23.85 ppm	117.07 ppm	10.32 ppm	135.64 ppm	21.92 ppm		0.17 ppm	0.1 ppm
			Control	3.07 %	0.34 %	3.3 %	0.24 %	0.37 %	0.27 %	29.74 ppm	132.63 ppm	12.43 ppm	146.99 ppm	19.94 ppm		0.41 ppm	0.2 ppm

Product Trial Report

Yield Results Data

High Level Yield Heat Map



This data was filtered based on $-0.5 / +1.5$ St Dev

Yield Summary BPA	
Location	Yield
X246	237.29
Control	232.12
Yield Response	5.17

Yield Values	
●	168.2 - 212.3
●	212.4 - 231.7
●	231.7 - 243.8
●	243.9 - 259.7
●	259.8 - 292.6

Product Trial Report

Product Trial Comments:

This trial had a +5.17 bushels/acre yield response using -0.5/+1.5 Standard Deviation measurement method to tighten up yield data points.

The Flag Test study showed X246 achieved better emergence. X246 had 34 plants emerge within a 93 GDU window compared to 33 for the control.

Documented Fungicide Applications on Control

- Veltyma applied on 8/19/24

Product Trial Report

Application Date and Details:

Application #1

Application Date: 5/23/24

Growth Stage: N/A

Application Method: In-Furrow

Product Application Rate/Acre (X246): 1 quart

Tank Mix Rate/Acre: 6 gallons

Application #2

Application Date: 6/13/24, 340 GDU's

Growth Stage: V4

Application Method: Foliar

Product Application Rate/Acre (X246): 2 quarts

Tank Mix Rate/Acre: 12 gallons

Application #3

Application Date: 7/12/24, 1032 GDU's

Growth Stage: V15

Application Method: Foliar

Product Application Rate/Acre (X246): 2 quarts

Tank Mix Rate/Acre: 12 gallons

Application #4

Application Date: 7/31/24, 1444 GDU's

Growth Stage: R1

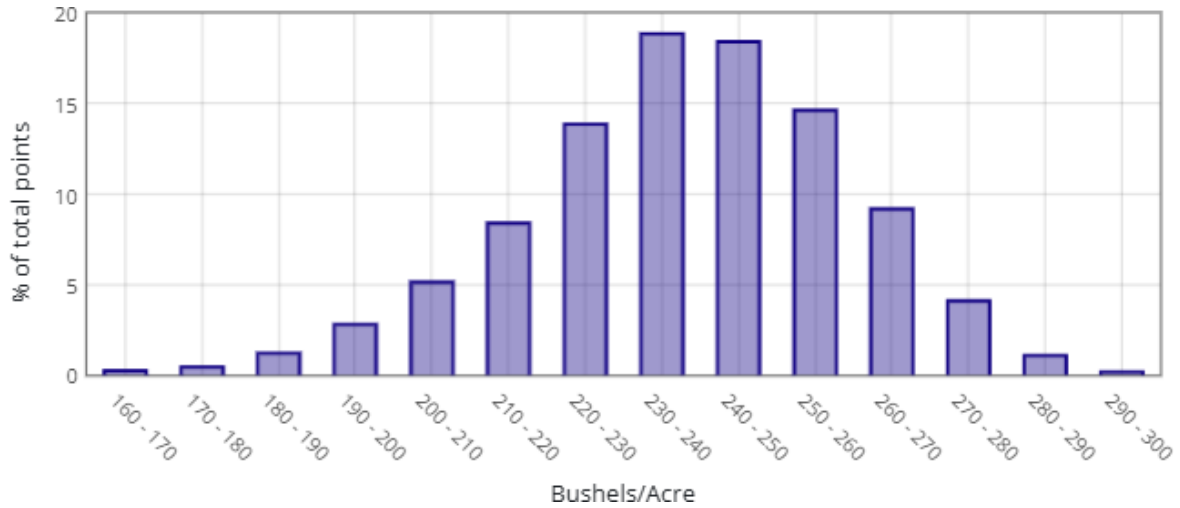
Application Method: Foliar

Product Application Rate/Acre (X246): 2 quarts

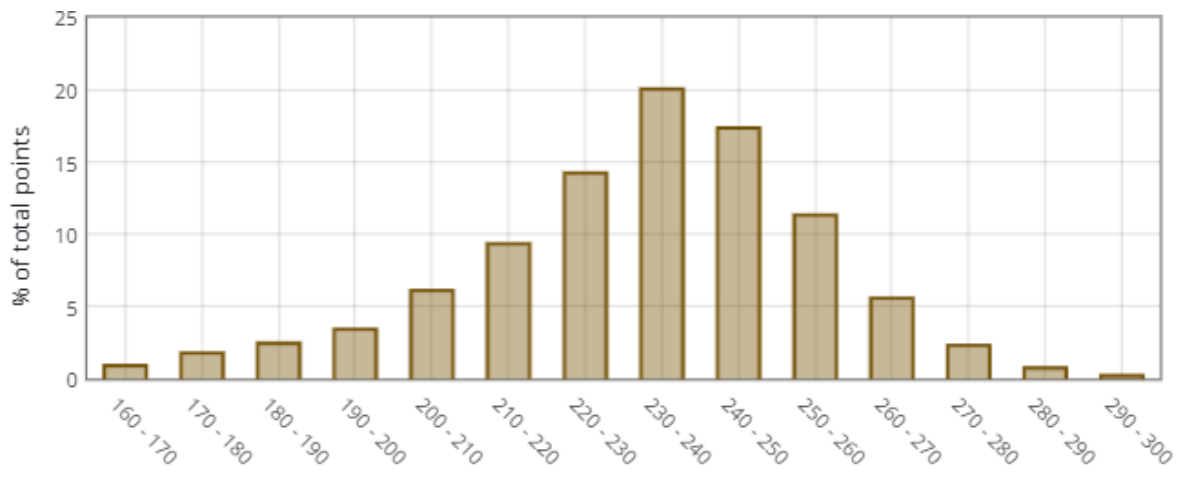
Tank Mix Rate/Acre: 15 gallons

Product Trial Report

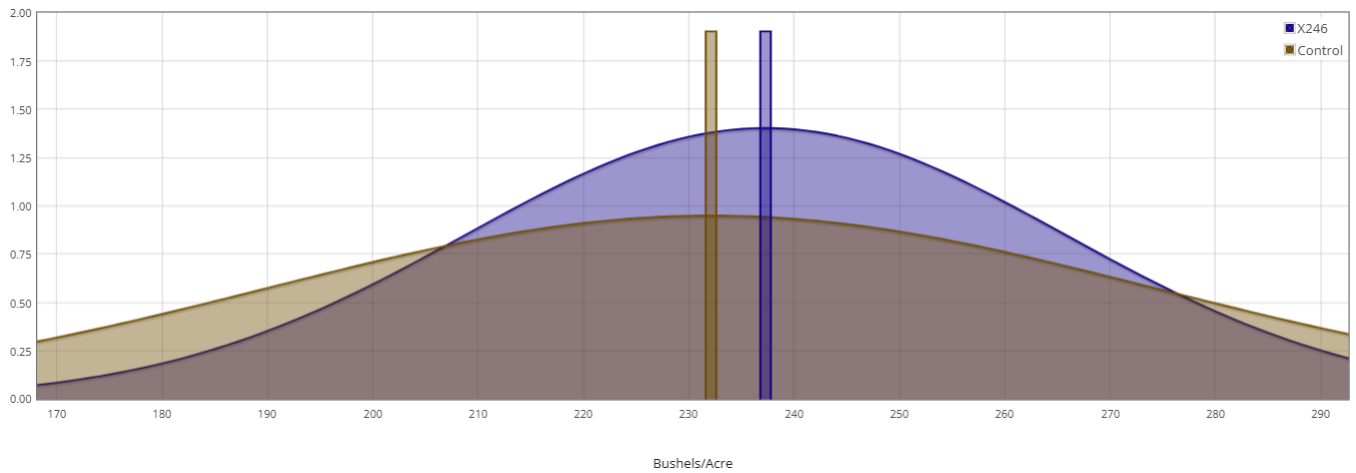
X246



Control



Normal Curve Distribution



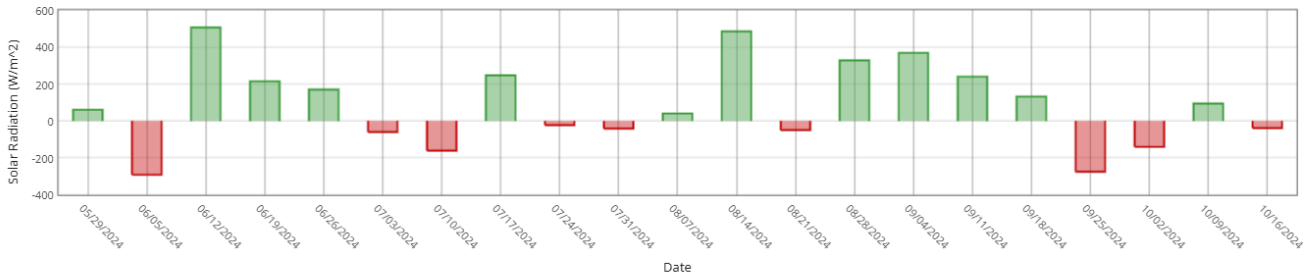
Product Trial Report

Trial Location Weather Data vs 5 Yr Avg

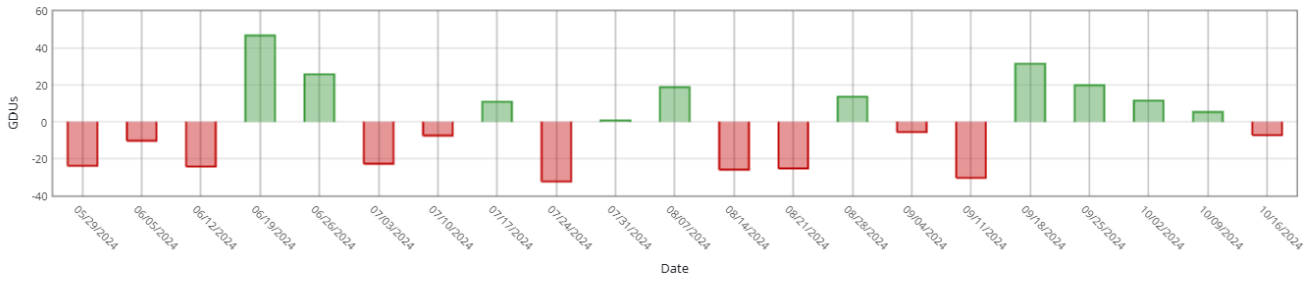
Historical Averages based on past years

Cumulative Week over Week

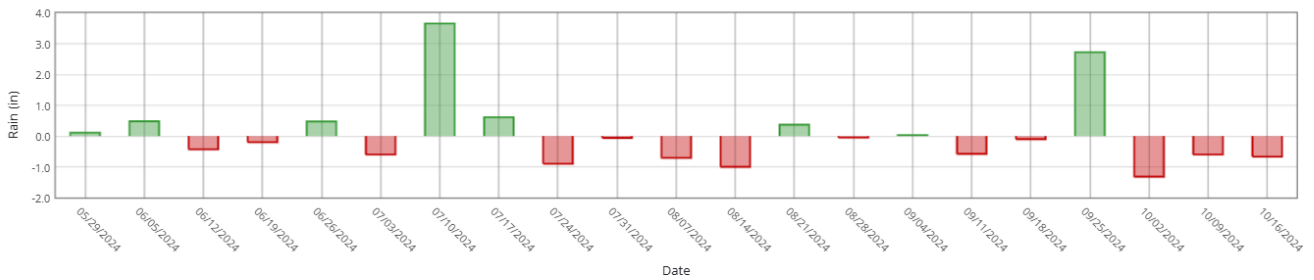
Sunlight



Heat (GDUs)



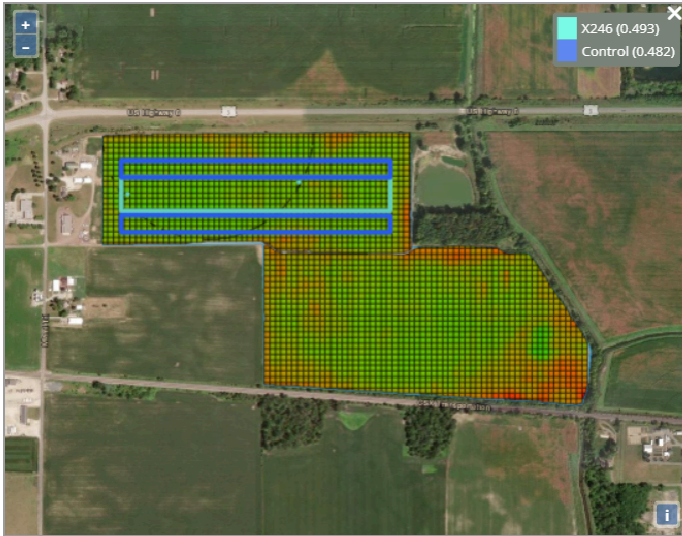
Rain



Product Trial Report

Additional References

Satellite Imagery - 09/03/2024 - Trial: X246 -NDVI
Green



This satellite image (NDVI Green) measures plant health and chlorophyll markers. The purpose of measuring near the end of the growing season is to gauge "Stay Green" capability of the Trial & Control in a study. This trial location had a +1.87% higher measurement than the control